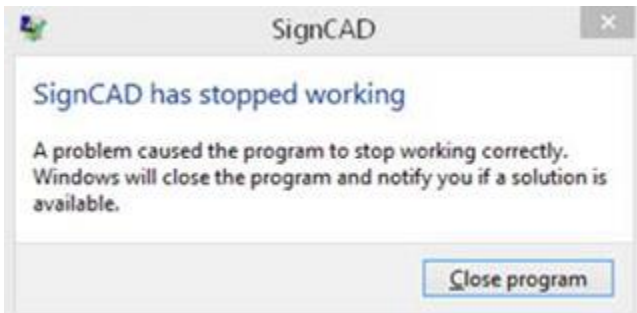


Issue - SignCAD fails to open and gives a “SignCAD has stopped working” error



Solution – Check the Data Execution Prevention (DEP) settings on the computer

If your hardware allows for hardware-based Data Execution Prevention (DEP), then SignCAD needs to be added to a list of exempt programs.

- 1) Open the **Control Panel**
- 2) Select **“System”**
- 3) Select **“Advanced Settings”**
- 4) Under **“Performance”** select **“Settings”**
 - a. If DEP is available on your system, a **DEP tab** will be present in the **Performance Setting dialog**. Select this tab if it's present (if it's not present, then your system doesn't have DEP).
 - b. If **“Turn on DEP for all programs and services except those I select”** is selected, then you need to **add SignCAD.exe to the list of exempt programs**. Select 'Add' Browse to SignCAD.exe (C:\SignCAD) as shown below:

