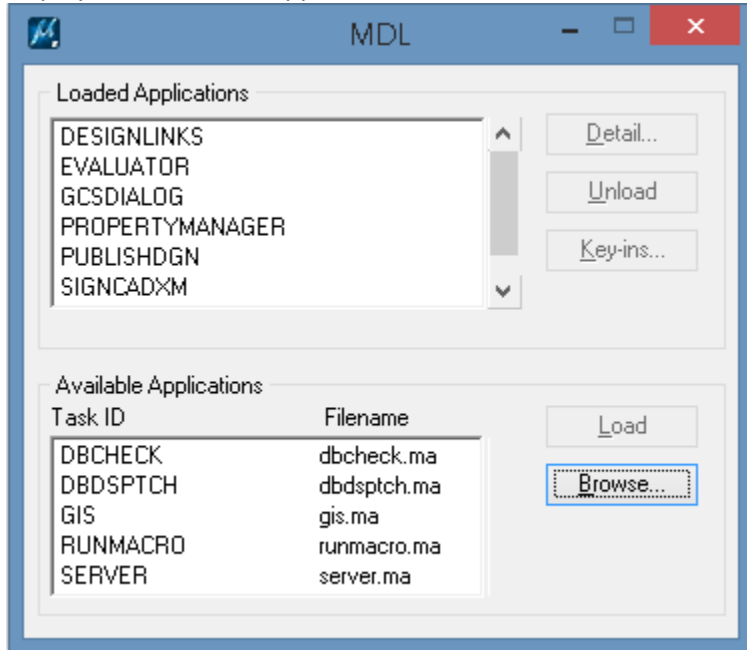
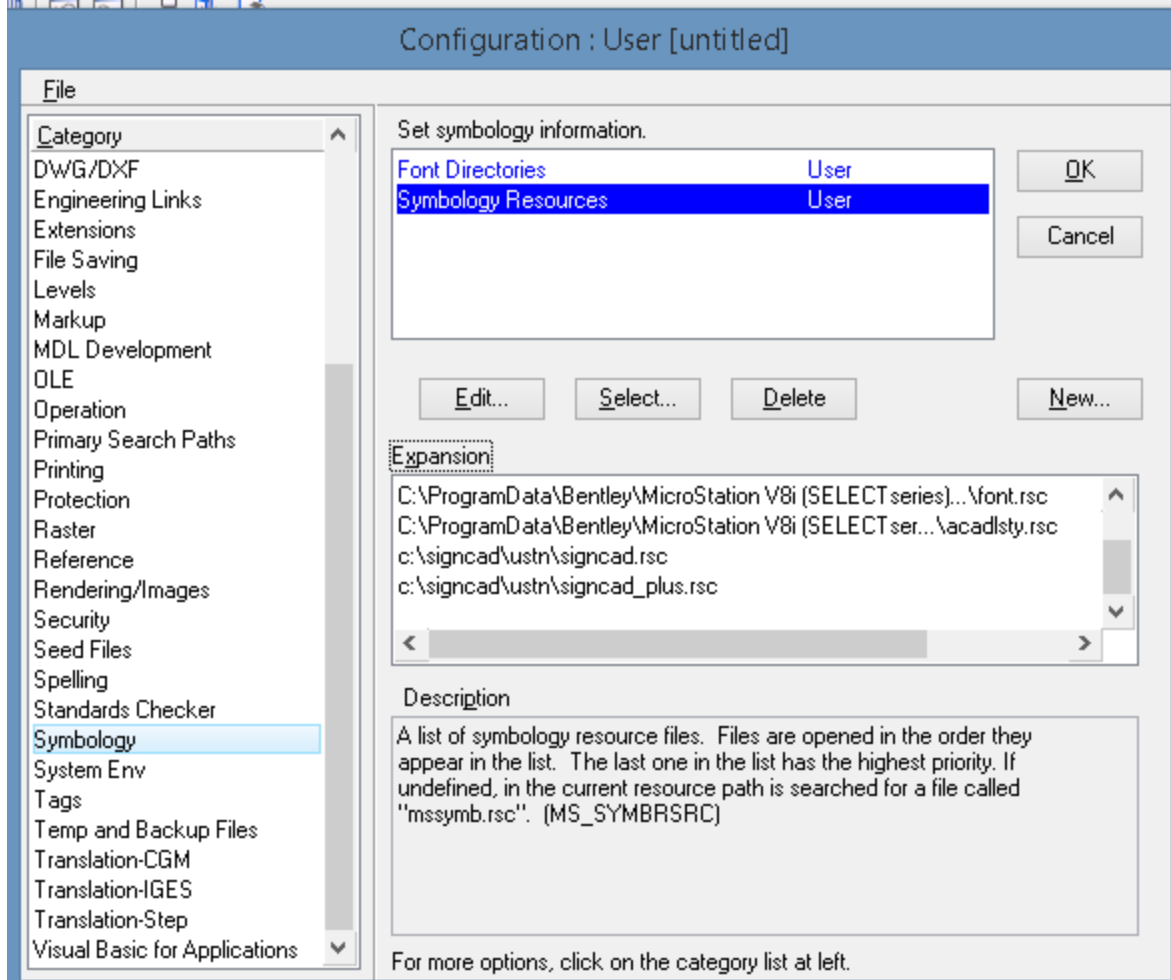


Instructions for Loading the SignCAD MDL in MicroStation SELECTseries 3 or 4

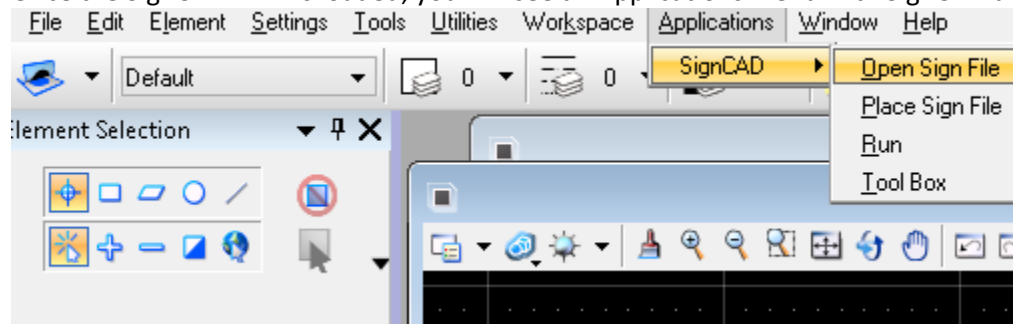
In MicroStation, pick Utilities>MDL Applications. In the MDL dialog box, press the Browse button. Browse to your C:\SignCAD\Ustn folder and select the SignCADXM and press Open. Pick SIGNCADXM from under the Available Applications and press the Load button. SIGNCADXM should now display under Loaded Applications.



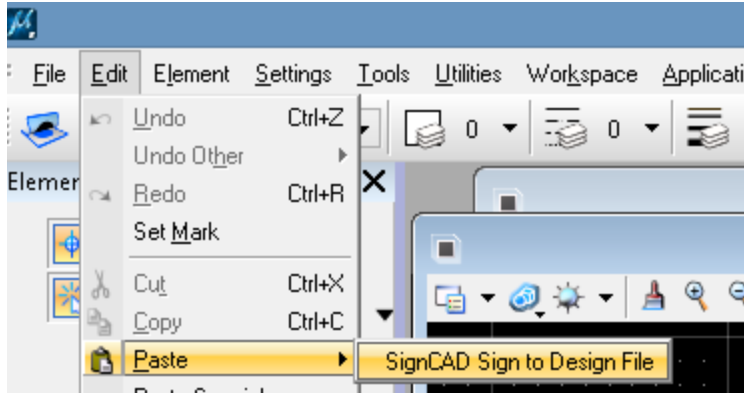
You will also want to make sure that the SignCAD .rsc files are listed in the Expansion under Symbology as shown below:



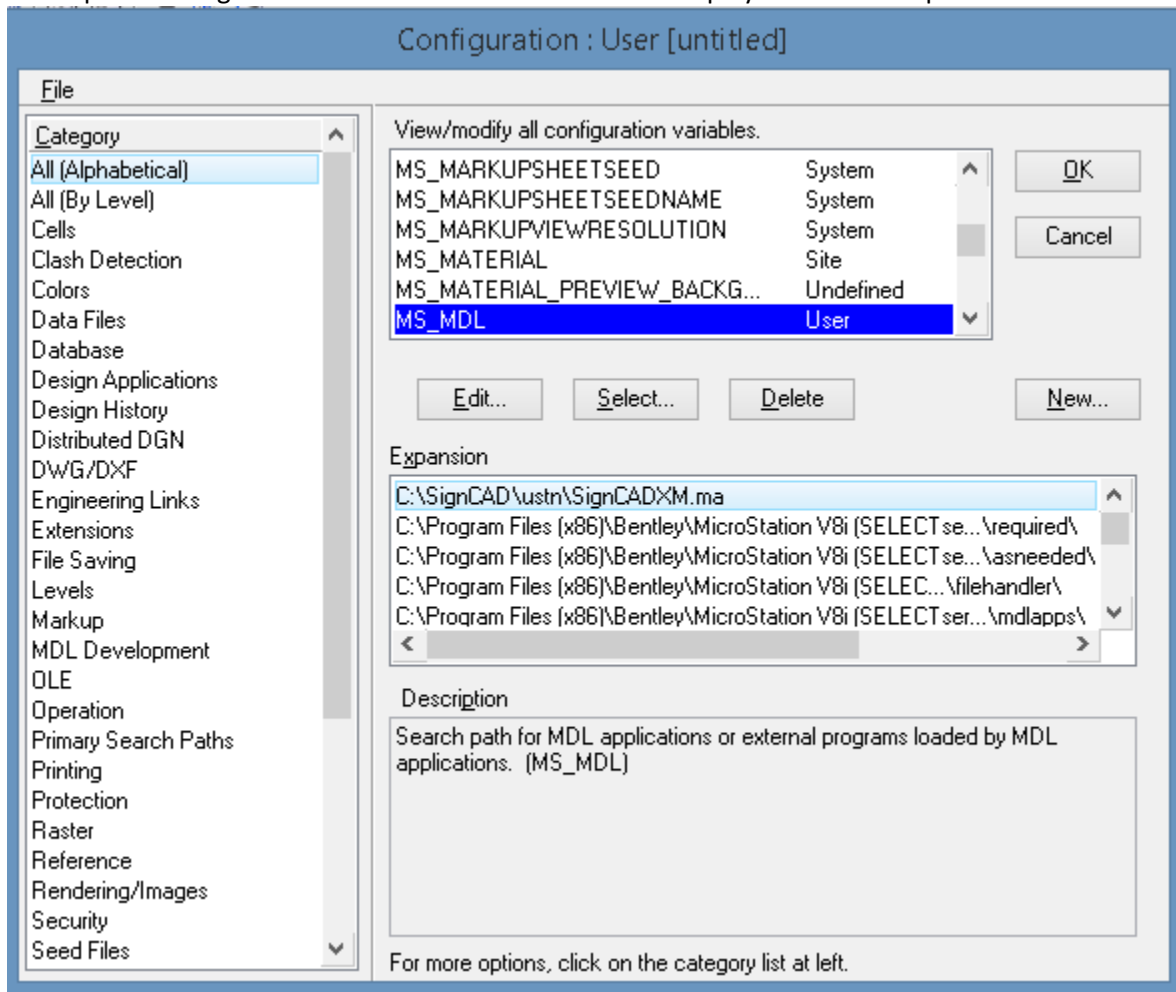
Once the SignCAD MDL is loaded, you will see an Applications menu with SignCAD under it.



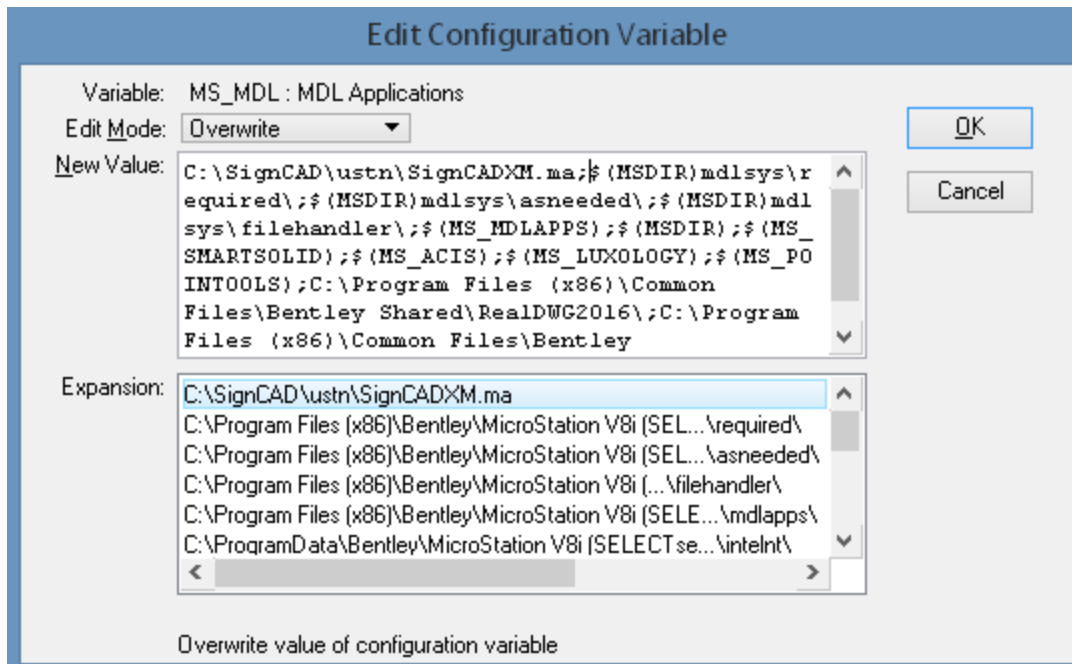
You should also be able to select a sign in SignCAD (hold down <ctrl> key and window select your sign), copy it (Edit>Copy) and paste it into MicroStation (Paste>SignCAD Sign To Design File).



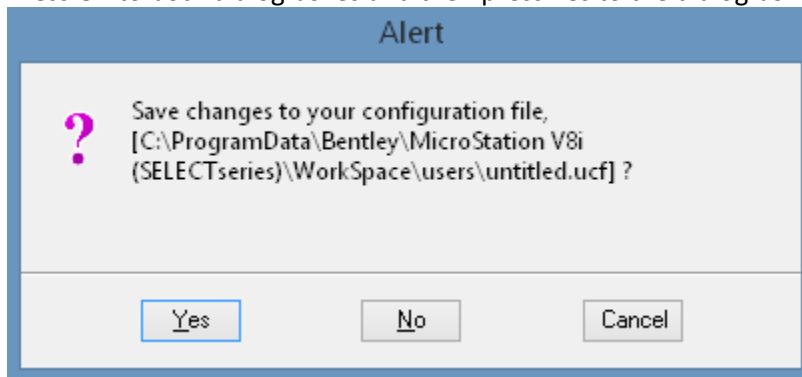
If the SignCAD MDL doesn't stay loaded for you, then in MicroStation, go to Workspace>Configuration. Make sure the SIGNCADXM displays under the Expansion as shown below:



If you don't see the path for the SIGNCADXM, you will need to add it. Pick the Edit button and add the path C:\SignCAD\ustn\SignCADXM.ma in the New Value section so it appears in the Expansion as shown below:

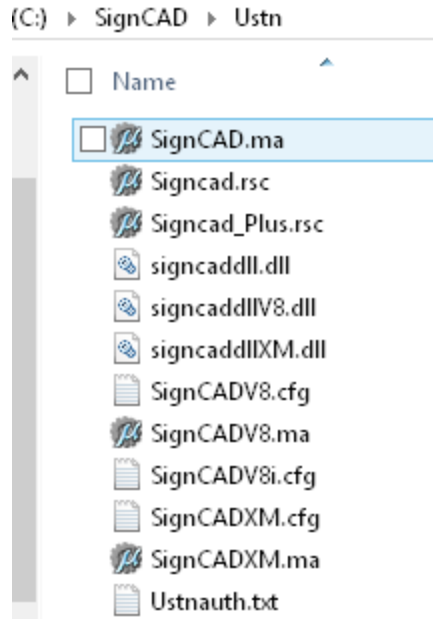


Press OK to both dialog boxes and then press Yes to the dialog box shown below:



You may need to exit MicroStation and then open it again for the changes to work.

The SignCAD config files for the different versions of MicroStation are located in the C:\SignCAD\ustn folder as shown below:



MicroStation SELECTseries 3 & 4 use the SignCADXM.cfg file.

Copy the correct .cfg file for the version of MicroStation you are using into the C:\Program Files (x86)\Bentley\MicroStation V8i (SELECTseries)\MicroStation\config\appl folder.

If PROJECTWISE or GEOPAK are installed, then the config file needs to be in the folder where those programs expect to find it. Those programs don't look in the default folder for MicroStation. Below is an example path for GEOPAK:

